



TRP SETTING (Crypto Transponder Generation)

“TRP SETTING” program

The TRP SETTING program is installed with the Win Transfer/Silca Remote Service Program.

It is used to generate or initialize some types of blank transponders. This utility is provided for anyone who has SILCA or non precoded original transponders. Such transponders can be initialized for a specific application, as shown in the table below.

Type of Transponder	Vehicle make	Silca TRP to generate	ID TRP to generate	Silca TRP blank to use	ID Silca TRP blank to use	Application
Megamos Crypto	CHEVROLET DAEWOO	T6	48-A	T6	48	Key added by diagnostic device
TEXAS Crypto	Various makes	T7 - T13 - T16	60	GTI	--	Key added by diagnostic device
TEXAS Crypto	MINIBISHI	T18	61	GTI or T16	60 (T16)	Key added by diagnostic device
TEXAS Crypto	MINIBISHI SUBARU	T21	62	GTI or T16	60 (T16)	Key added by diagnostic device
TEXAS Crypto	FORD MAZDA	T17	63	GTI	--	Key added by diagnostic device
TEXAS Crypto	CHRYSLER RENAULT	T8	64	GTI	--	Key added by diagnostic device
TEXAS Crypto	SUZUKI	T19	65	GTI or T16	60 (T16)	Key added by diagnostic device
TEXAS Crypto	SUZUKI type 2	--	66	GTI or T16	60 (T16)	Key added by diagnostic device
TEXAS Crypto	TOYOTA	T31	67	GTI	--	Key added by diagnostic device
TEXAS Crypto	YAMAHA cycles	T22	69	GTI or T16	60 (T16)	Key added by diagnostic device
TEXAS Crypto	TOYOTA EU	--	70	GTI	--	Key added by diagnostic device
TEXAS Crypto	SUZUKI cycles	--	71	GTI	--	Key added by diagnostic device
TEXAS Crypto	KAWASAKI cycles	--	72	GTI	--	Key added by diagnostic device
TEXAS	Various makes	T3 - T4	4C	GTI	--	Key added by diagnostic device
PHILIPS Crypto	OPEL	T12	40	T28	4W	Key added by diagnostic device
PHILIPS Crypto	NISSAN	T25	41	T28	4W	Copy (RW) or key added by diagnostic device
PHILIPS Crypto	VAG	T10	42	T28	4W	Copy (RW) or key added by diagnostic device
PHILIPS Crypto	VAG	T28	4W	T28	4W	Copy (RW) or key added by diagnostic device
PHILIPS Crypto	MINIBISHI VOLVO	T30	4M	T28	4W	Key added by diagnostic device
PHILIPS Crypto	PEUGEOT	T29	45	T28	4W	Copy (RW) or key added by diagnostic device
PHILIPS Crypto 2	Various makes	T14	46	GTI	--	Key added by diagnostic device
PHILIPS Crypto 2	CHRYSLER RENAULT-DACIA	T32	46	GTI	--	Key added by diagnostic device
PHILIPS Crypto 2	MINIBISHI Colt	--	46	GTI	--	Key added by diagnostic device
PHILIPS Crypto 2	MINIBISHI CDP	--	46	GTI	--	Key added by diagnostic device
PHILIPS Crypto 2	GM Circle +	--	46	GTI	--	Key added by diagnostic device



TRP SETTING (Crypto Transponder Generation)

Meaning of the columns:

Type of transponder:	Indicates the type of transponder
Vehicle make:	Indicates which vehicle make generation applies to
Silca TRP to generate:	Indicates the Silca reference transponder to be generated
ID TRP to generate:	Indicates the ID of the transponder to be generated
Silca TRP blank to use:	Indicates which Silca blank transponder to use.
ID Silca TRP blank to use:	Indicates the ID of the Silca blank transponder to use.
Application:	Indicates how to use the generated transponder on the vehicle: Copy (RW) key: means that the generated transponder can be used to make a copy of the original key by means of the RW device. Add key with diagnostics: Means the generated transponder must be programmed using a diagnostics device (SBB) or by a special manual procedure, if applicable. Otherwise the key will not start the vehicle.



TRP SETTING (Crypto Transponder Generation)

Program functions

Function associated to program icons:



Opens the menu for pre-coding transponders



Opens the options menu (choice of language, device to be used, serial port)



Views this guide to using the program



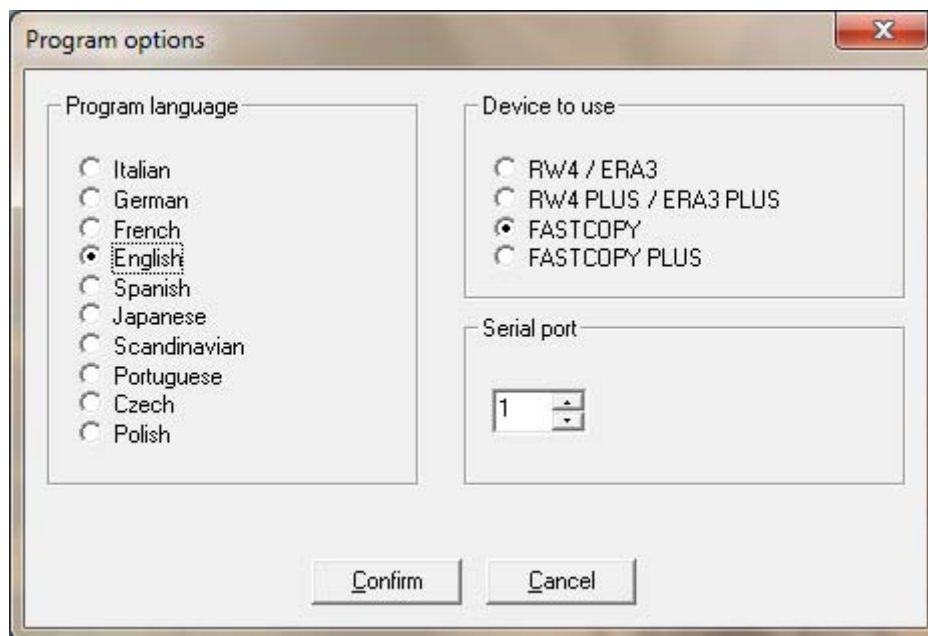
Closes the program

The same controls are available by clicking on the “Transponder” menu in the top right-hand corner or on the “?” menu.

Program OPTIONS

Open the options menu and select:

- the language to use
- the device model connected to the PC
- the serial port

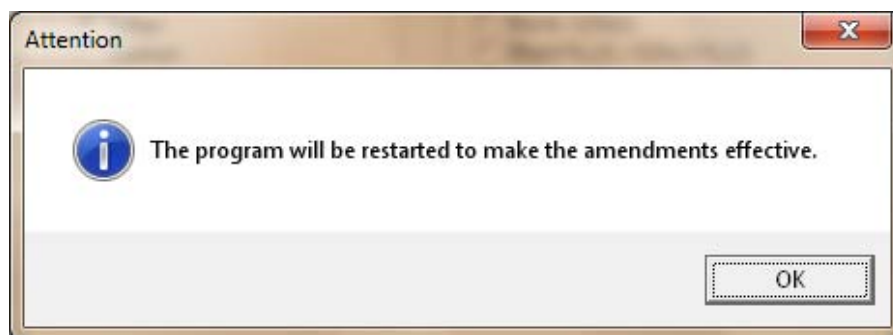


When the options have been selected, click on “**Confirm**” to make the settings operative.

Note: When the program language is changed the display will show:



TRP SETTING (Crypto Transponder Generation)



Press "OK" and the program will be automatically restarted in the chosen language.

PRECODING Transponders

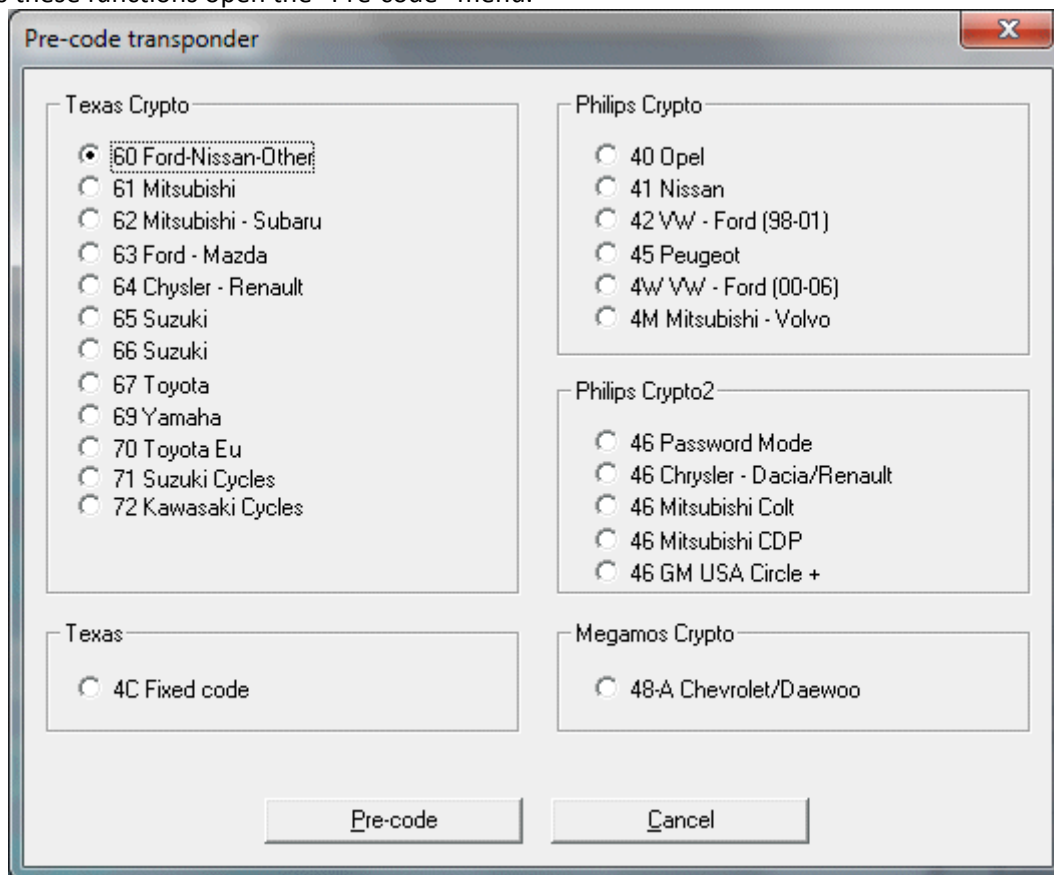
This program is used to generate Texas® fixed code and crypto, Philips® Crypto and Crypto 2, and Megamos® Crypto transponders using Silca transponders or off the shelf blank transponders for the following applications:

TEXAS Crypto Various makes	(60) (on TRP Silca GTI only)
TEXAS Crypto MITSUBISHI	(61)
TEXAS Crypto MITSUBISHI / SUBARU	(62)
TEXAS Crypto FORD/MAZDA	(63) (on TRP Silca GTI only)
TEXAS Crypto SUZUKI)	(65)
TEXAS Crypto SUZUKI Type 2	(66)
TEXAS Crypto TOYOTA	(67) (on TRP Silca GTI only)
TEXAS Crypto YAMAHA Cycles	(69)
TEXAS Crypto TOYOTA EU	(70) (on TRP Silca GTI only)
TEXAS Crypto SUZUKI Cycles	(71) (on TRP Silca GTI only)
TEXAS Crypto KAWASAKI Cycles	(72) (on TRP Silca GTI only)
TEXAS fixed code VARIOUS MAKES	(4C) (on TRP Silca GTI only)
PHILIPS Crypto OPEL	(40)
PHILIPS Crypto NISSAN	(41)
PHILIPS Crypto VAG - Ford 1998-2001	(42)
PHILIPS Crypto VAG - Ford 2000-2006	(4W)
PHILIPS Crypto MITSUBISHI-VOLVO	(4M)
PHILIPS Crypto PEUGEOT	(45)
PHILIPS Crypto2 Various makes	(46) (on TRP Silca GTI only)
PHILIPS Crypto2 CHRYSLER/RENAULD DACIA	(46) (on TRP Silca GTI only)
PHILIPS Crypto2 MITSUBISHI Cold	(46) (on TRP Silca GTI only)
PHILIPS Crypto2 MITSUBISHI CDP	(46) (on TRP Silca GTI only)
PHILIPS Crypto2 GM CIRCLE+	(46) (on TRP Silca GTI only)
MEGAMOS Crypto compatible Chevrolet – Daewoo	(48-A)



TRP SETTING (Crypto Transponder Generation)

To access these functions open the “Pre-code” menu.



Choose the type of transponder to be pre-coded and confirm by pressing “Pre-code”.

Transponder PRE-CODING PROCEDURE

Before pre-coding a transponder choose the blank, original or SILCA transponder from those available. Below is an example:

To make a Texas® Crypto transponder

Silca blank transponder	GTI
Silca blank transponder	T16
Orion blank transponder	T23
Texas® blank transponder	RI-TRP-B9WK

To make a Texas® fixed code transponder

Silca blank transponder	GTI
-------------------------	-----

To make a PHILIPS® Crypto 2 transponder

Silca blank transponder	GTI
-------------------------	-----

To make a PHILIPS® Crypto transponder

Silca blank transponder	T28
Orion blank transponder	T36
Philips® blank transponder	PCF7935AS

To make a MEGAMOS® Crypto transponder

Silca blank transponder	T6
Orion blank transponder	T42
Megamos® Magic blank transponder II	

ATTENTION: This list is purely indicative as it may be amended in later updates of the program.



TRP SETTING (Crypto Transponder Generation)

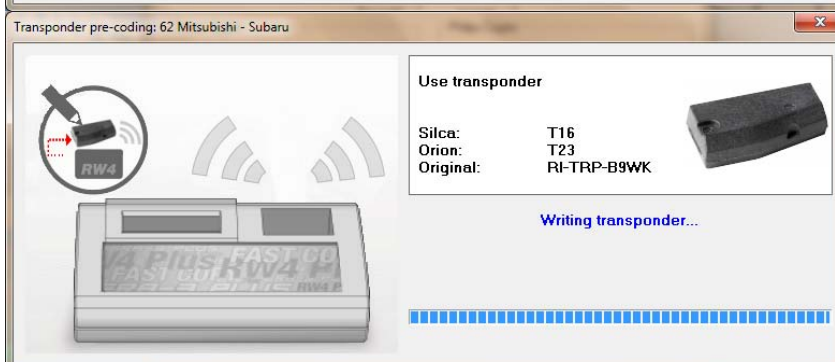
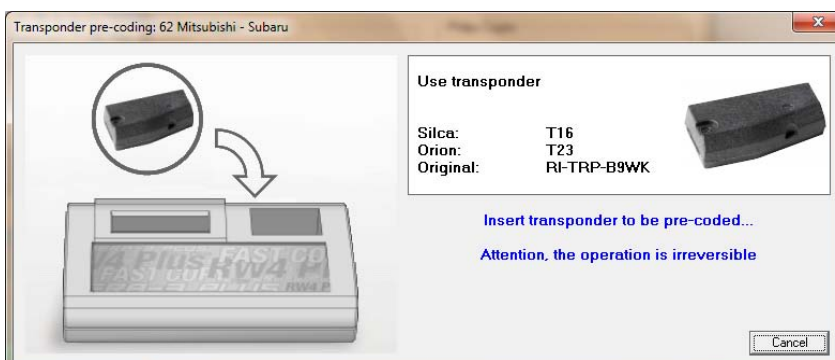
Insert a transponder chosen from those indicated in the reading receptacle and the device will automatically begin the writing process.

ATTENTION

This operation will last a few seconds, during which the transponder must remain in the reading receptacle.

When the writing process is over a warning message will tell you to remove the transponder from the device.

After removing the transponder, you may pre-code another transponder of the same type. Choose "YES" to repeat the process with a new transponder or "NO" to cancel.



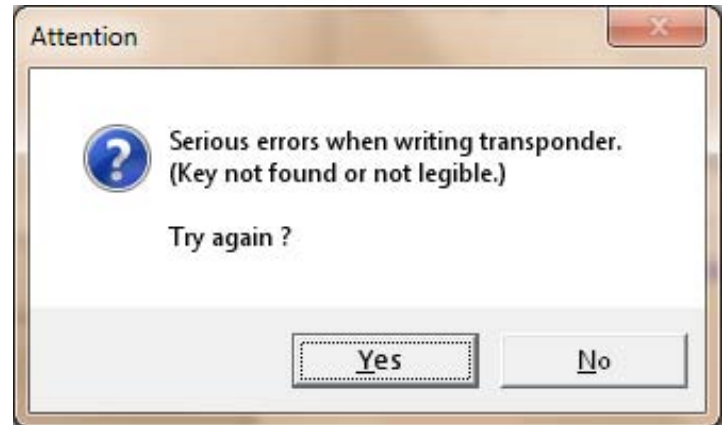


TRP SETTING (Crypto Transponder Generation)

ERROR OR WARNING MESSAGES THAT MAY APPEAR WHEN USING THE PROGRAM.

- the transponder has not been inserted or has been inserted badly
- the transponder has been removed before the end of the operation
- the transponder to be written is damaged

To solve the problem we advise inserting the transponder vertically, as shown on the right, and keep it in this position until the operation is finished



The message shown in the box may appear when an attempt is made to pre-code a transponder that is not blank or comes from a vehicle key. In the latter case, pay special attention as pre-coding will make the key no longer usable on the vehicle.



- a transponder is being used that cannot be written
- the transponder being used is not suitable for the type of pre-coding to be carried out (e.g. a Texas® transponder has been inserted in the device instead of a Megamos transponder)

To solve the problem we advise checking that the transponder being used is the one required.



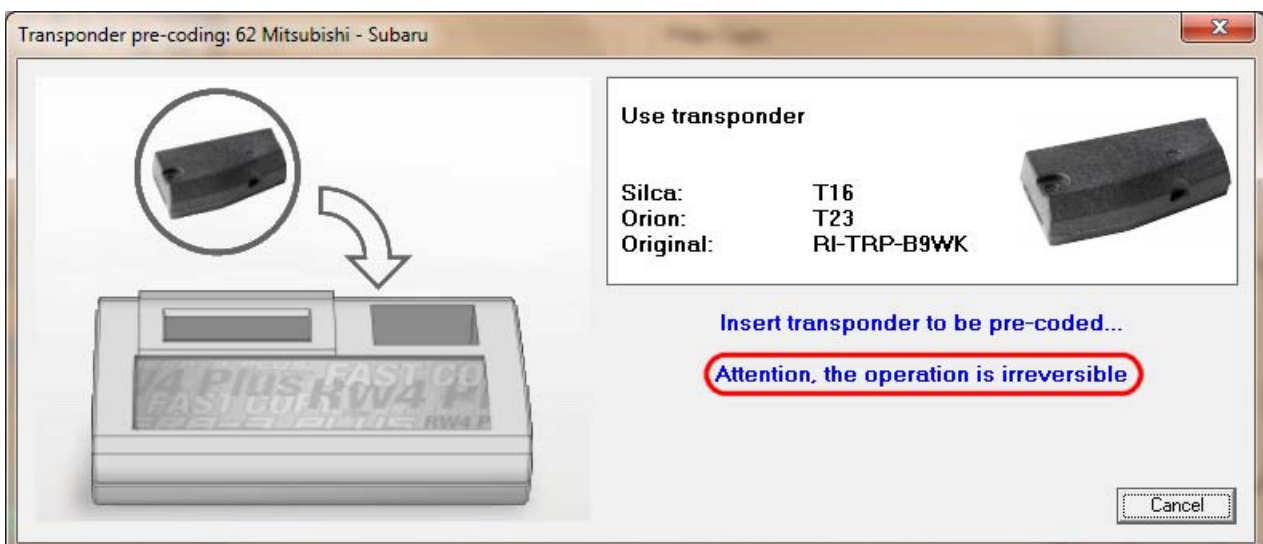
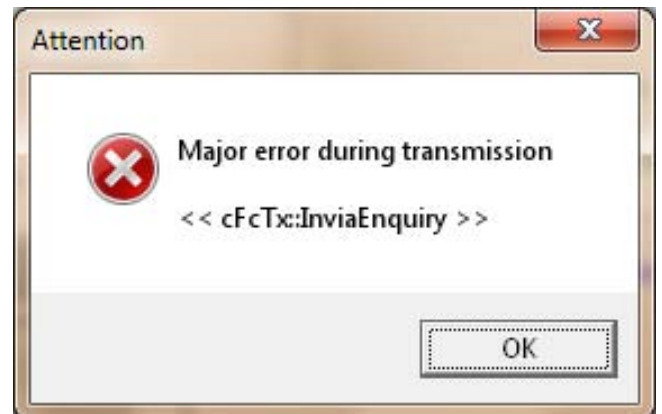


TRP SETTING (Crypto Transponder Generation)

- the device is not responding
- the device is switched off
- the device is not connected or the serial port is not properly configured

To solve the problem we advise checking that the device:

- is switched on
- is not performing other operations (the display must show the message "CONNECTED TO PC" or the main menu)
- is connected to the PC and the serial port is properly configured



This message indicates that the type of pre-coding is irreversible, i.e. once pre-coded the transponder CANNOT be used for other pre-coding operations.



TRP SETTING (Crypto Transponder Generation)

NOTES FOR PRECODING GTI TRANSPONDERS

When precoding Texas® fixed code and Philips® Crypto 2, GTI transponders can be written five times with different codes.

When precoding Texas® Crypto, GTI transponders can be written only once in this way, i.e. a GTI transponder previously precoded by Texas® Crypto cannot be precoded again with a new Texas® Crypto code; it can be re-used for precoding by Texas® fixed code or Philips® Crypto 2.